



The Jungle Tree Pack No 1 includes seven templates for Forester Pro of trees and other vegetation that are commonly found within rainforest regions. Forester Pro templates are used to generate randomized tree models. The models included in this pack are described below:

Installing the Tree Pack

The downloadable Tree Packs are self installing. Simply run the installer as administrator (right click the executable and select **run as administrator**). The installer will add the Tree Pack models directly to Forester Pro's tree library. To install the Tree Pack please ensure you are using Forester v1.03 or above. A patch to upgrade your version of Forester Pro is available on our website (<http://www.hptware.co.uk/downloads>).

Big Leaf Mahogany



Although becoming rare in rainforests Mahogany trees are characteristic as both canopy and emergent trees that breach the canopy. This template is based on the South American Big Leaf Mahogany, however, there are similar species in the rainforests of the Far East and Africa. Some Mahogany trees can reach over 60 m in height.

Dipterocarp



Dipterocarp trees are canopy and emergent trees in rainforests and indigenous to jungles worldwide. In places Dipterocarp trees dominate the canopy of the forest and are also emergent trees reaching up to 90 m in height.

The bark texture used for this model is dotted with lichens – a pattern that is common in rainforests.

Banana tree



Banana trees are widespread and are found in the jungles of South America, the Caribbean, Africa and the Far East. Within rainforest they appear within the understory layer, often in areas where large trees have fallen to allow sunlight to penetrate to the forest floor.

Banana trees are common decorative plants within urban environments around the world.

Banana tree leaves provide excellent foliage items for jungle scenes with a characteristic and recognisable shape.

Elephant Ear



Elephant Ear plant is the common name for a wide range of rainforest plants that have large leaves (up to 6 ft in diameter). Such plants grow in the understory where large leaves are adaptations to the low light levels.

Elephant Ear plants are excellent foliage items for any jungle scene since they limit line of sight significantly without being too obviously “space fillers”. They are also often found as decorative plants within urban landscapes.

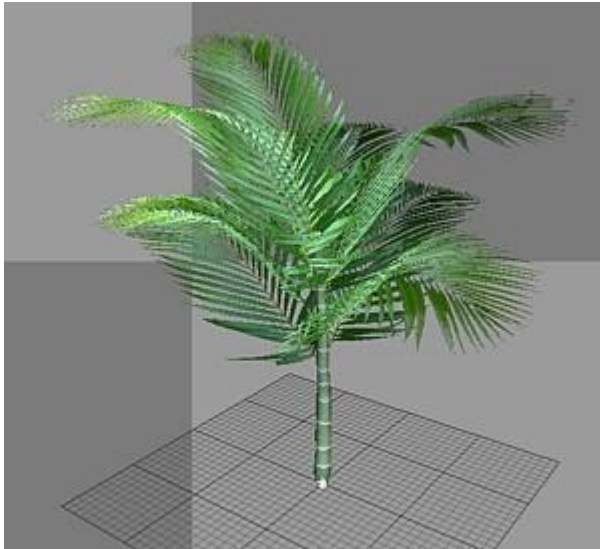
Bamboo



Bamboo is a characteristic foliage item in jungles worldwide and can dominate some areas of rain forest. The bamboo template allows clusters of bamboo to be created as multi-trunk models and it is simple to change the cluster size to generate a variety of models for bamboo thickets.

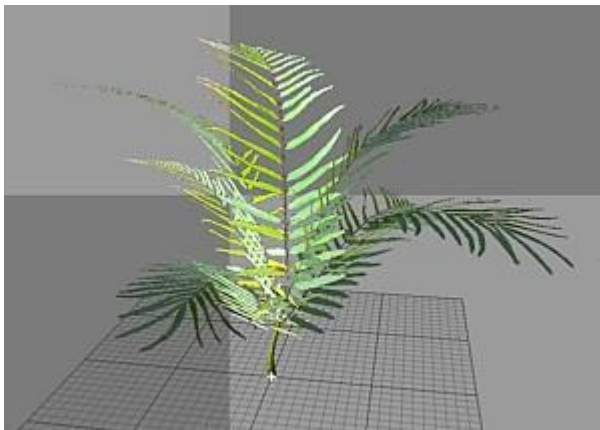
Bamboo models are excellent objects to use in restricting line of sight and creating interesting and challenging jungle levels.

Juvenile Palm



No jungle scene would be complete without some kind of palm tree. Palms often occur within clearings within rain forest and juvenile trees are an important part of the understory foliage. In jungles you really can't have too many palm leaves to make interesting lines of sight.

Jungle Fern



Ferns are a characteristic part of the understory foliage in jungles and can also be used as epiphytes growing on the limbs of canopy trees.